

# USING THE ZBE COLORPRO 2

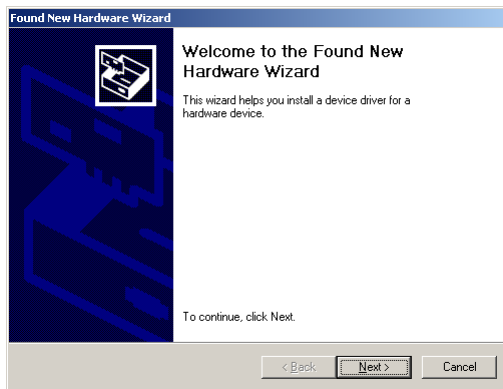
---

The ColorPro 2 is designed for a modern computer workstation, but it functions and feels like a traditional VCNA color input station. Combined with WorkStream, its color and density input wheels allow quick color correction of large quantities of images.

## INSTALLING THE COLORPRO 2

WorkStream IA 2.0 or greater must be installed before beginning the ColorPro installation.

1. Close WorkStream if it is open.
2. Plug the ColorPro 2 into an open USB slot.
3. Microsoft's Found New Hardware Wizard will be shown. The following screens differ slightly between different versions of Microsoft Windows.

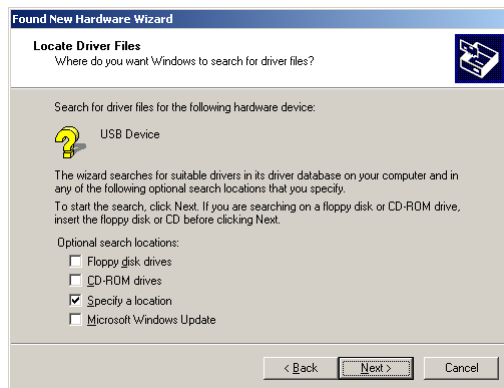


Click **Next**.

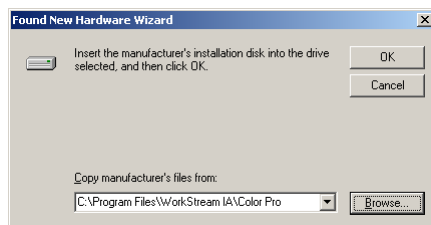
4. Select **Search for a suitable driver** and click **Next**.



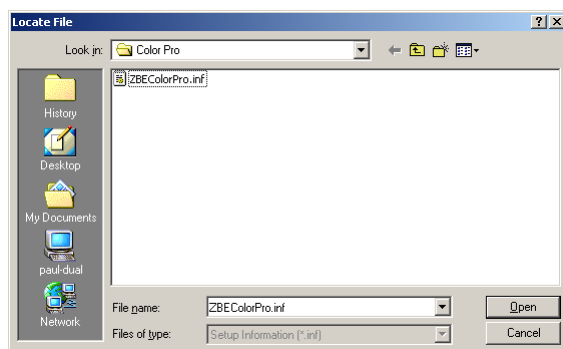
5. Check **Specify a location** and click **Next**.



6. Click **Browse**.

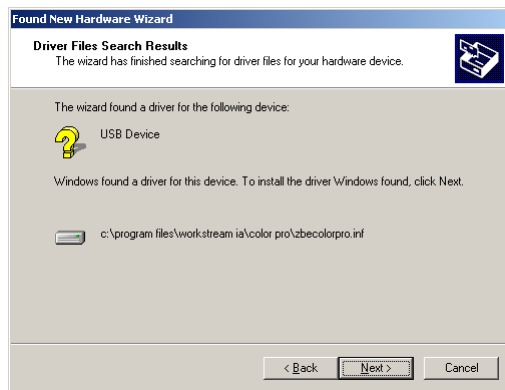


7. Browse to the directory in which WorkStream IA is installed. This is usually called **C:\Program Files\WorkStream IA\**  
Inside this directory, you will find a folder called **Color Pro**, which contains **ZBECOLORPro.inf**.

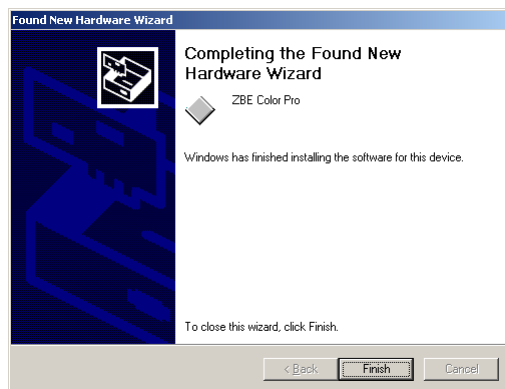


- Select ZBECOLORPro.inf and click **Open**.
8. Click **OK** in the dialog shown in step 6.

9. Click **Next**.



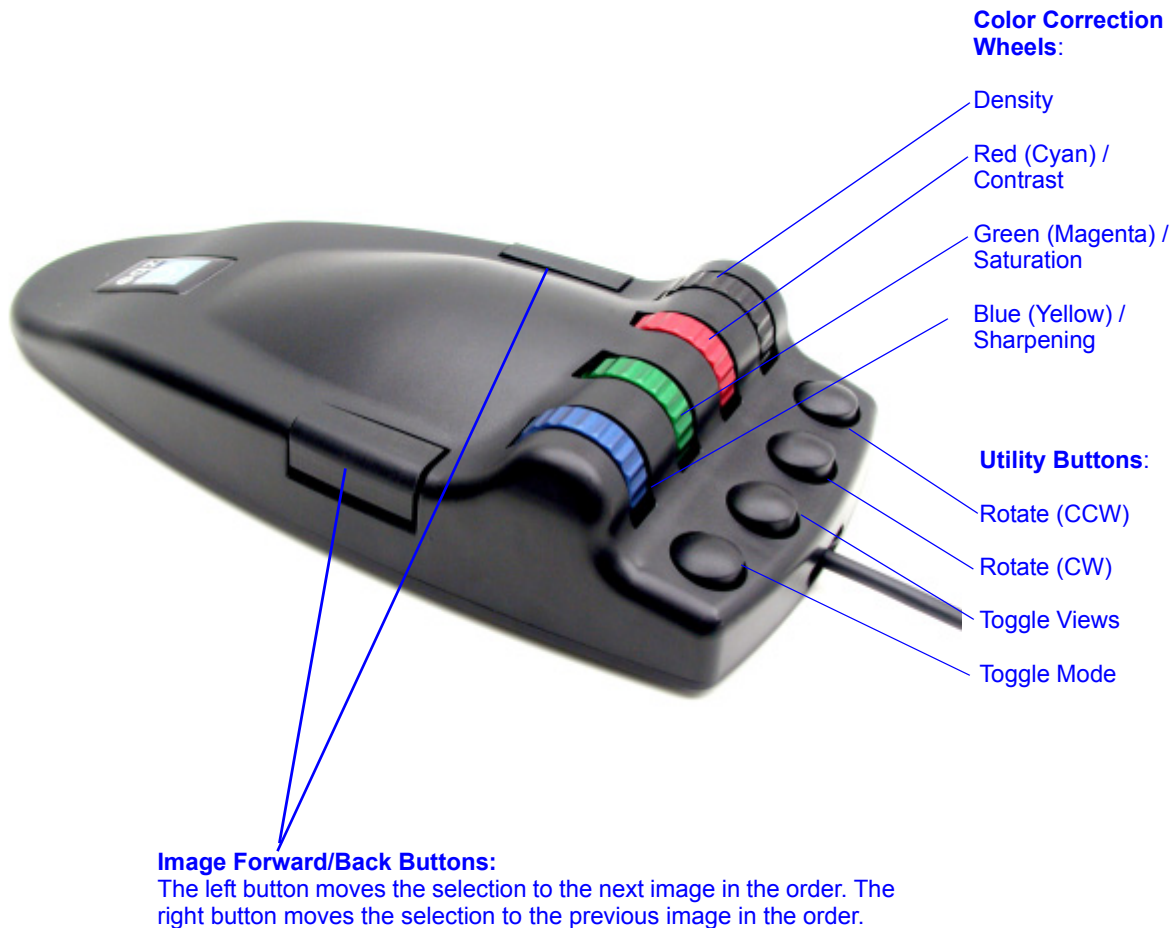
10. Click **Finish**.



Congratulations! You have just finished installing the ColorPro 2.

## USING THE COLORPRO 2

Once you have installed the ColorPro 2, you are ready to begin using it. The controls are explained below.



### ***Color Correction Wheels***

These wheels, labelled above, function in two modes. In one mode, they adjust Density, Red, Green, and Blue, as their colors suggest. In the other mode, they control Density, Contrast, Saturation, and Sharpening. To switch between modes, use the Utility Button labelled Toggle Mode above.

### ***Utility Buttons***

Use the Rotate buttons to orient images correctly. The Toggle Views button allows you to switch between thumbnail and large image views. The Toggle Mode button is described above, under "Color Correction Wheels".